

# It's All About the Data – a 21st Century Value Proposition

Janette Corcoran, Peter Dahlhaus & Helen Thompson  
University of Ballarat, Mount Helen Campus, VIC 3350, Australia

## eResearch

A key building block of Australia's National eResearch priorities is the transformation of institutional research data  
**FROM** being unstructured collections:

- \* Unmanaged
- \* Disconnected
- \* Invisible
- \* Single-use

**TO** being structured collections:

- \* Managed
- \* Connected
- \* Findable
- \* Reusable

(Australian National Data Service)

## VVG - Visualising Victoria's Groundwater

VVG provides access to research significant data held outside research institutions  
by developing tools for data linking, analysis and visualisation.

It draws together a unique collaboration of regional, state, national and international organisations which share  
the aim of building tools for researchers to access the most current environmental datasets  
applicable to integrated catchment management and modelling.

### Existing Fragmented Data Sets

For over 130 years, groundwater data has been collected in Victoria.  
**BUT**  
it has been  
gathered by a range of agencies,  
captured in various ways and  
held in separate formats.

*For example*

#### Department of Environment and Primary Industries

- ✓ Groundwater Management System
- ✓ Victorian Aquifer Framework
- ✓ Salinity observation bores
- ✓ Groundwater dependent ecosystems
- ✓ Depth to watertable
- ✓ Groundwater salinity

#### University of Ballarat

- ✓ Groundwater research data
- ✓ Orphaned bores
- ✓ Historic groundwater maps

#### Department of State Development, Business and Innovation

- ✓ Geological Exploration and Development Information System
- ✓ Seamless Geology Map
- ✓ 3D models of basins

#### State Library of Victoria

- ✓ Historic boring records
- ✓ Historic maps

#### Environment Protection Authority

- ✓ Audit data for rehabilitated sites

#### Community data (Citizen Science)

- ✓ Mineral springs data
- ✓ Groundwater discharge observations
- ✓ Watertable monitoring (Landcare)
- ✓ Unpublished reports and theses

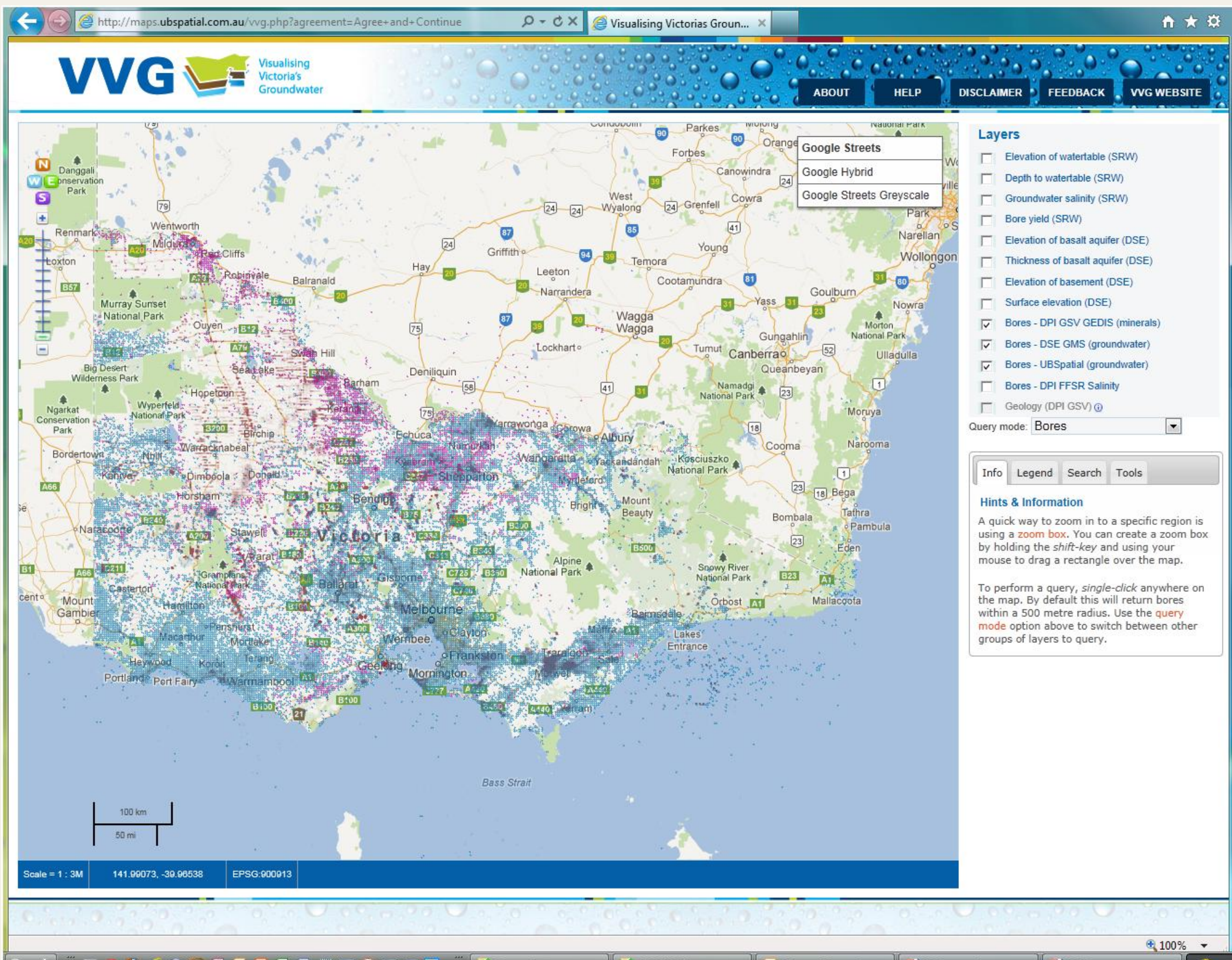
#### Catchment Management Authorities

- ✓ Groundwater monitoring data
- ✓ Waterwatch and EstuaryWatch data
- ✓ Unpublished reports

## VVG Interoperability

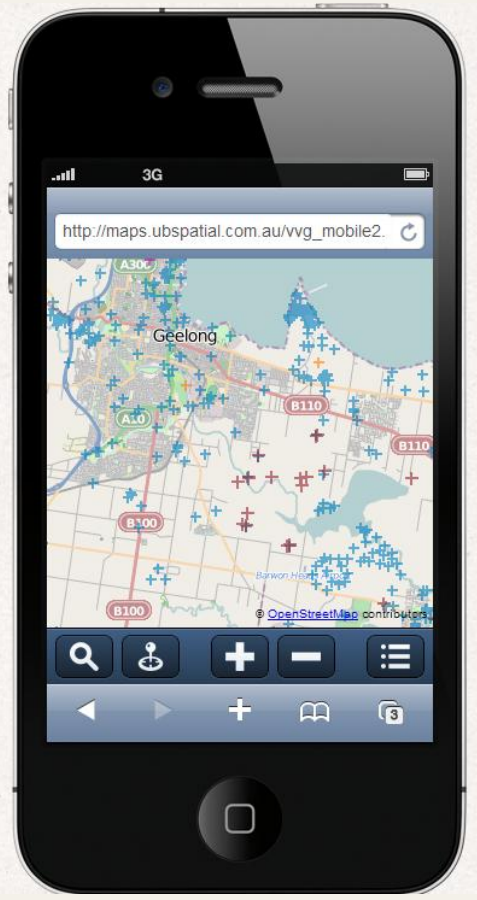
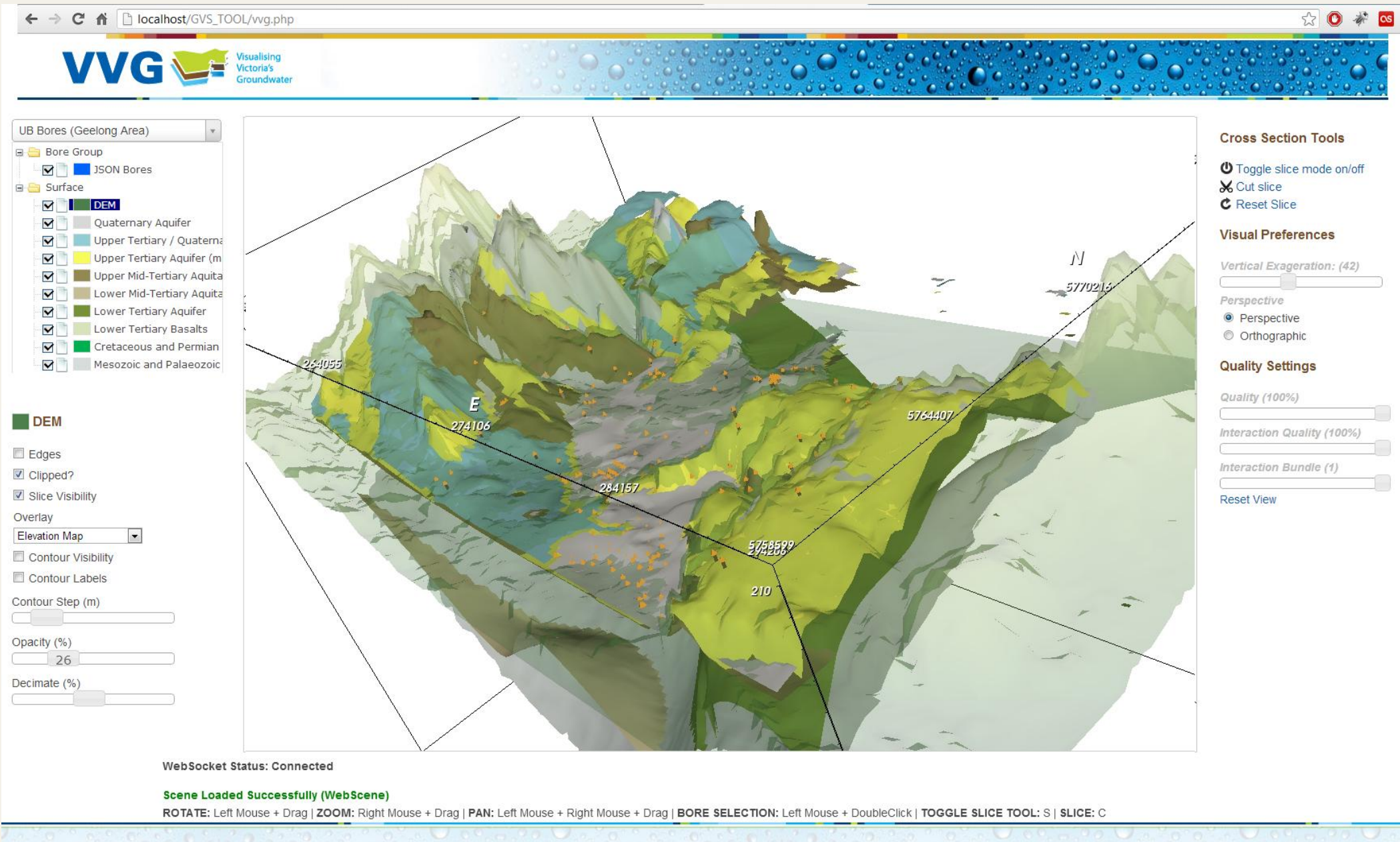
### www.vvg.org.au

- Maps dynamically generated from many separate data sources
- Map data is consumed via OGC web service



The VVG portal provides access to groundwater data from across Victoria.

It features a unique state-wide map of over 300,000 bores, as well as mapped and modeled surfaces, providing access to a user-friendly database offering the most comprehensive view of groundwater data in Victoria.

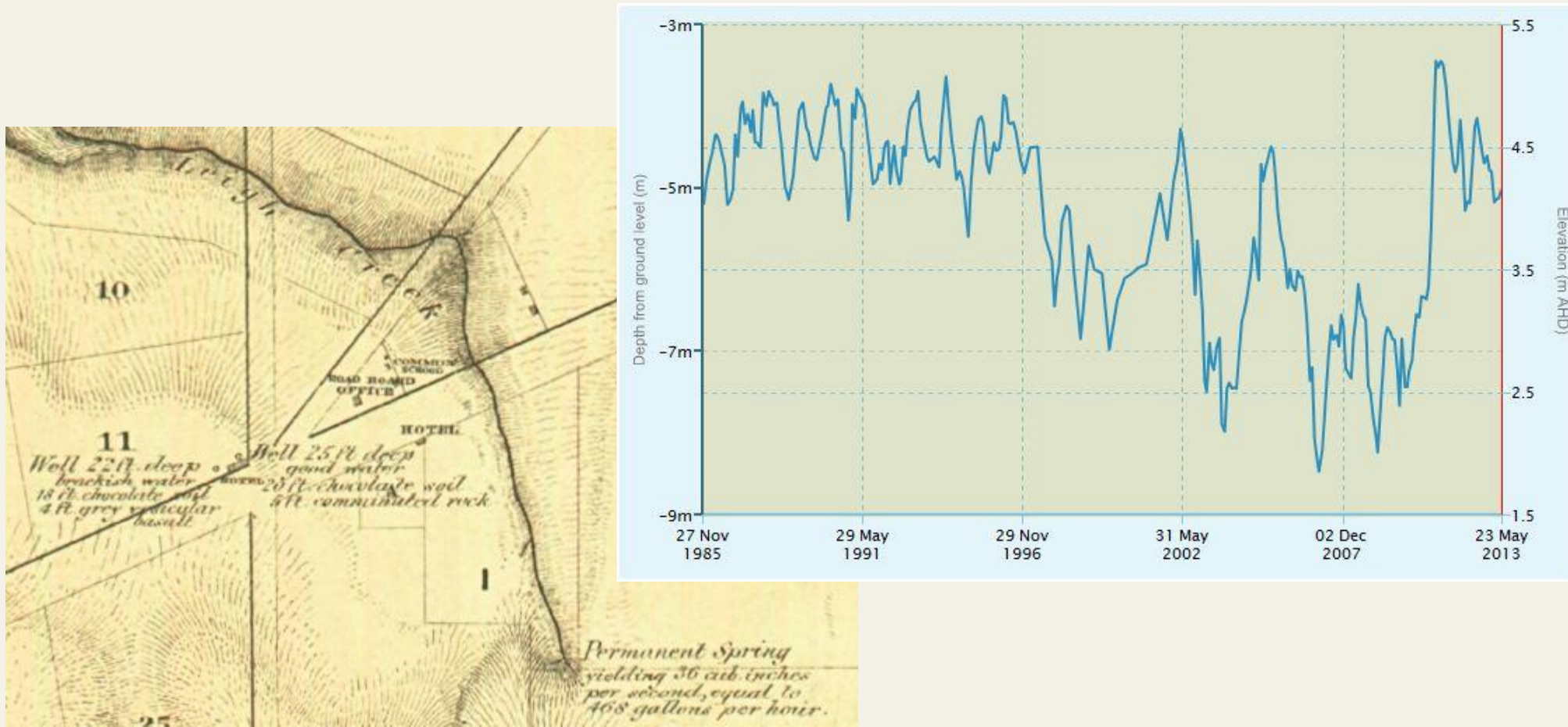


Mobile interface with tailored functionality



Virtual bore predictions for any location in Victoria

Links to current and Historical data



University of Ballarat  
Learn to succeed



For further information visit the website: [www.vvg.org.au](http://www.vvg.org.au)  
Dr Peter Dahlhaus: [p.dahlhaus@ballarat.edu.au](mailto:p.dahlhaus@ballarat.edu.au)